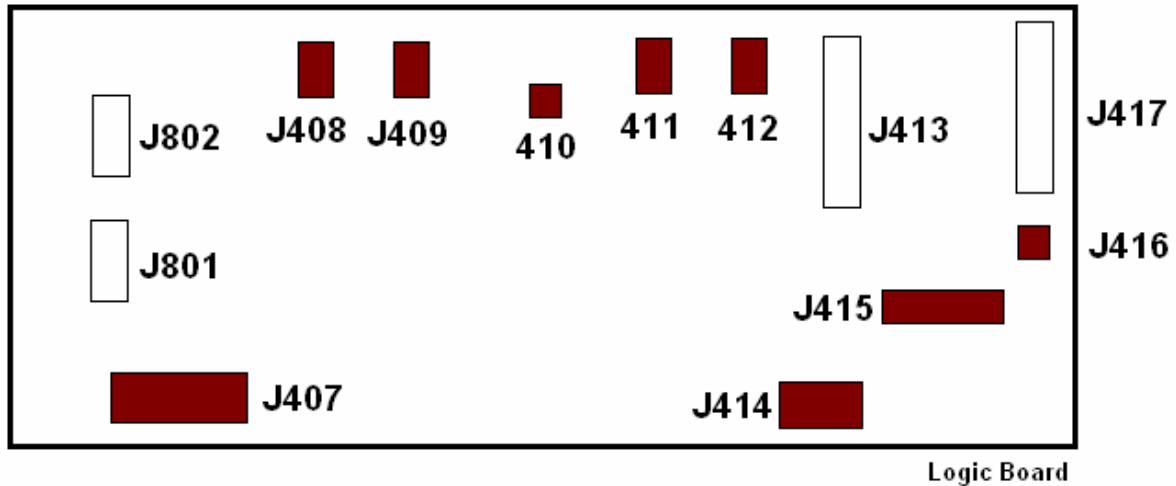


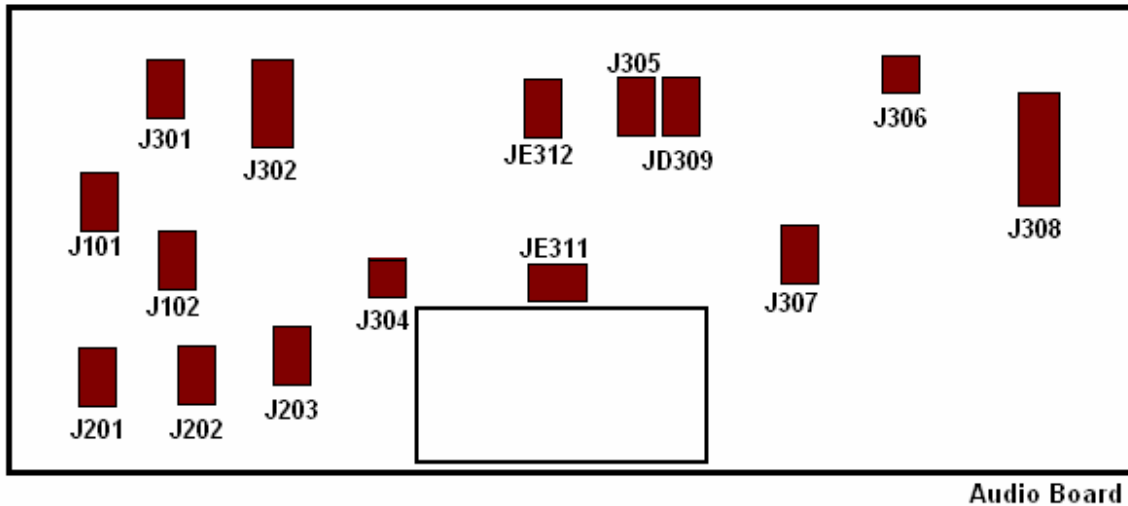
Tandberg TD 20 A Connector Layout

Logic Board



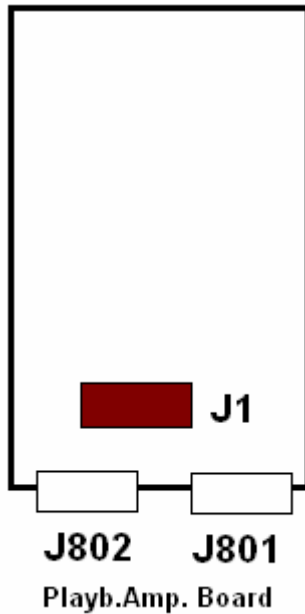
Board	Connectors	Wires	Colors	Destination
Logic Board	J801, J802	3	-	Playback Amp Board
	J407	1,2 3,4,5 6,7,9 8	Blue, Brown Yellow, Grey, Violet Red, White, Green Orange	J304 J308 J308 J303
	J408	1,2,3	Grey, Violet, Yellow	Front
	J409	1,2,3,4	Black, Violet, Green, Red	Front
	J410	1,2	Red, Blue	Worm Gear Motor
	J411	1,2,3	Black, White, Red	Take-Up Reel Motor
	J412	1,2,3,4	Brown, Black, Green, Yellow	Front
	J413	1,7 2,4,6,8 3,5	NC Blue, Grey, Brown, Red White, Yellow	Capstan Motor 2,8uF Capacitor
	J414	1 2 3,4,5	Core/White White/White NC	J303 J303
	J415	1,2,3,5 4 6 7	Grey, Purple, White, Yellow NC Orange Red	Power Transformer 5uF Supply Reel Motor Capacitor 5uF Take-Up Reel Motor Capacitor
	J416	1,2	Green	Power Transformer
	J417	1,3 5,7 2,4,6	Brown Blue NC	Power Transformer Net Entry

Audio Board



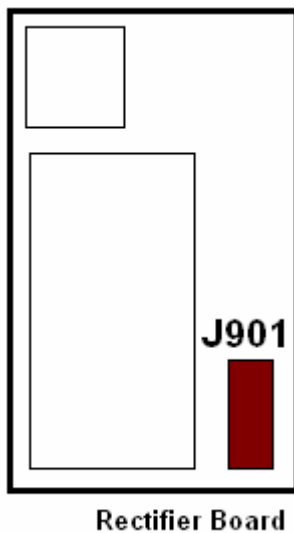
Board	Connectors	Wires	Colors	Destination
Audio Board	J101	1,2,3	Blue, Green, Brown	Left Input Line 1
	J102	1,2,3	Orange, Green, Brown	Left Input Line 2
	J201	1,2,3	Red, Green, Brown	Right Input Line 1
	J202	1,2,3	Violet, Green, Brown	Right Input Line 2
	J203	1,2,3	White, Green, Brown	Master Control
	J301	1,2,3	Grey, Green, Brown	Master Control
	J302	1	Red/Brown	Erase Head
		2	Core/Brown	Erase Head
		3	NC	
		4	Core/White	Erase Head
		5	Pink/White	Erase Head
	J303	1	White/White	J414
		2	Core/White	J414
	3	Orange	J407	
J304	1,2	Blue,Brown	J407	
J305	1,3	White, Green	Audio Board	
	2	Yellow	J306	
J306	1	NC		
	2	Yellow	J305	
J307	1,2,3	Grey, Black, Violet	Vu-Meters	
J308	1,2,3	Grey, Violet, Yellow	J407	
J309	4,5,6	Red, Green, White	J407	
	2	NC		

Playback Amplifier Board



Board	Connectors	Wires	Colors	Destination
Playb. Amp.	J1	1	Core/Brown	Playback Head
		2	Red/Brown	Playback Head
		3	NC	
		4	Core/White	Playback Head
		5	Pink/White	Playback Head
	J801, J802	3	-	Logic Board

Rectifier Board



Board	Connectors	Wires	Colors	Destination
Rectifier	J901	1,2	Blue	Power Transformer
		3,4,5	White, Violet, Grey	Logic Board
		6,7	Red	VU lighting