

seas

THE KITBOOK

EMBLA **2-WAY BASS REFLEX** **12 LITRES, 80 / 200 WATTS**

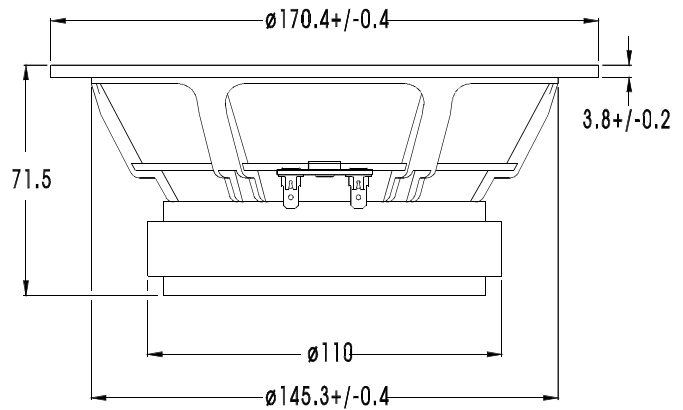
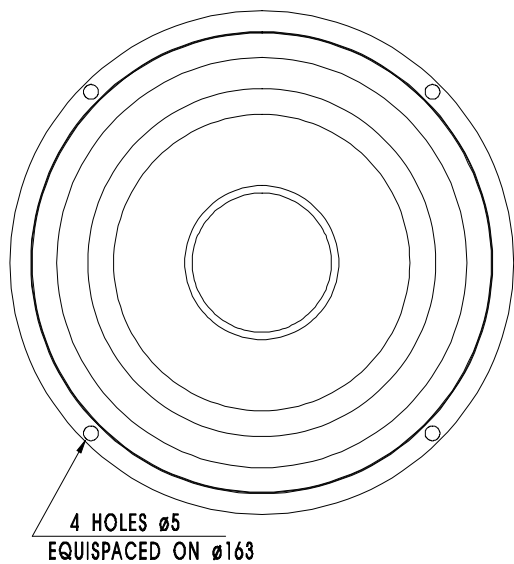
EMBLA is a compact 2-way bass reflex loudspeaker featuring the P17REX mid-woofer and the 25TAFC/D aluminium dome tweeter.

Great care has been taken to obtain a detailed, neutral reproduction of voices and music, and considering the small cabinet, an astonishingly deep and precise bass. While precise and neutral enough to be used as a monitor loudspeaker, Embla offers an involving and enjoyable listening experience.

Embla will perform equally well with the majority of program material. Her limitations will be evident only when pushed to reproduce at ear splitting levels, very loud orchestral music or a programme extremely rich in bass content.

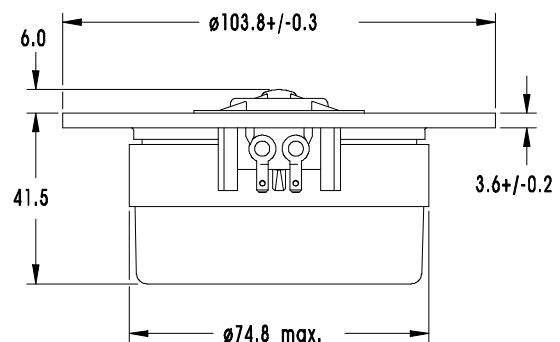
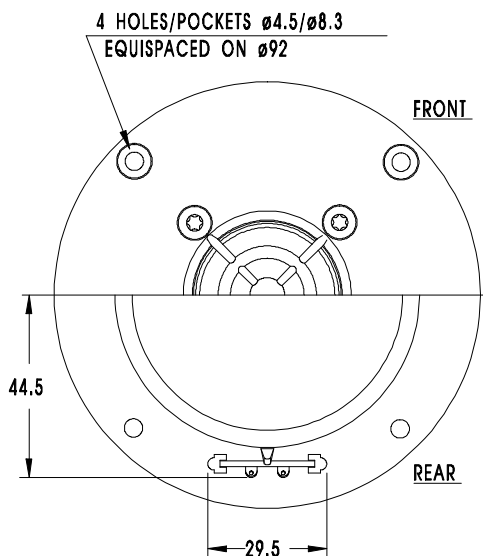
Embla should be placed on a shelf or a stand with the tweeter approximately at ear level. As always, the position relative to the walls should be chosen carefully to obtain some bass extension and at the same time low colouration in the mid-bass region.

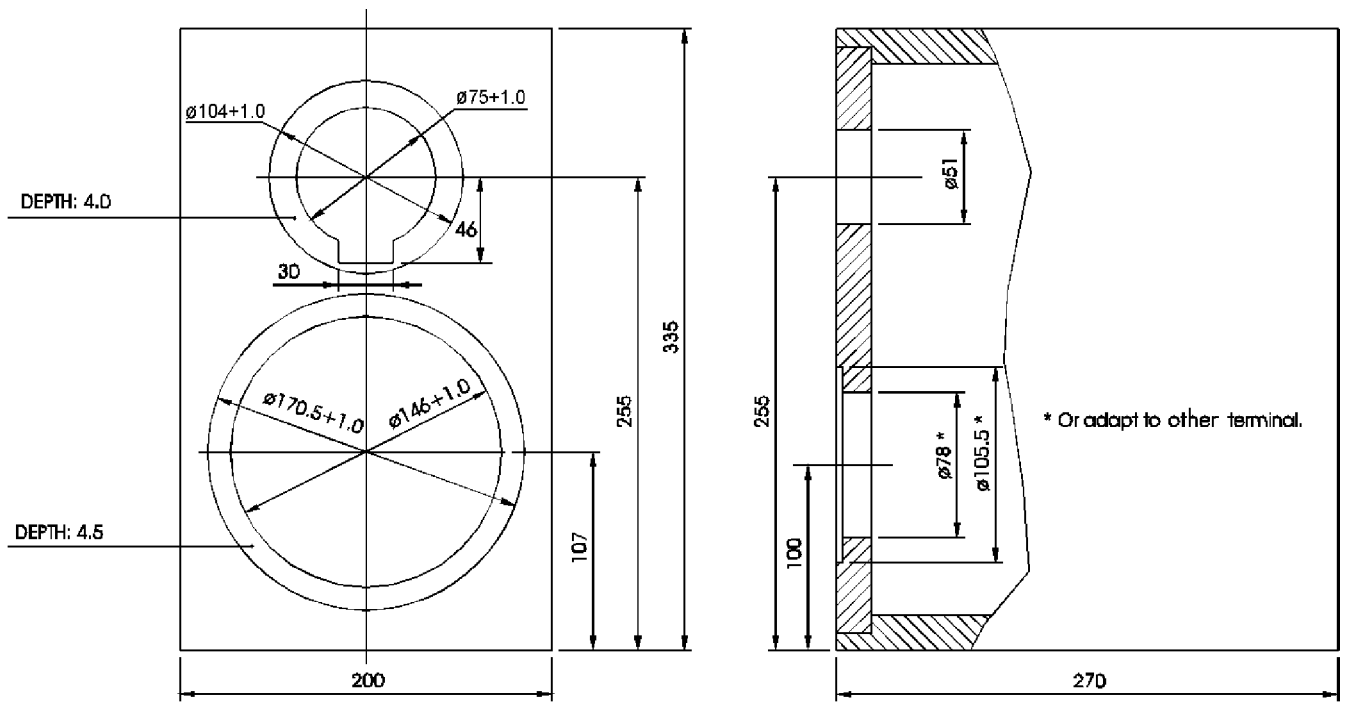
The design of Embla has been supervised by Bjørn Børja who has been engaged in drive unit development since 1972.



P17REX is a 6.5" High Fidelity woofer with an injection moulded magnesium chassis. A polypropylene based cone, a soft PVC dust cap and a high loss rubber surround are carefully matched to each other, resulting in an outstandingly smooth frequency response. The unit has a high power handling capacity due to its relatively large voice coil diameter. The magnet system has a T-shaped cross section of the pole piece for low modulation distortion. A large magnet system provides high efficiency and low Q.

25T AFC/D is a 25mm High Fidelity dome tweeter with glass fibre reinforced plastic chassis. The unit features high efficiency and smooth, extended response. Its aluminium diaphragm with critically designed shape and thickness behaves like a piston throughout the audible frequency range, resulting in good dispersion above 10 kHz. A carefully designed diffuser protects the diaphragm and compensates for a slight axial roll off towards 20 kHz. The specially designed soft surround allows a low fundamental frequency and excellent mechanical linearity. A damped hole in the pole piece and a tuned chamber behind the magnet, result in a low resonance frequency. The voice coil is immersed in magnetic fluid, allowing high power handling capacity and simplified crossover design.





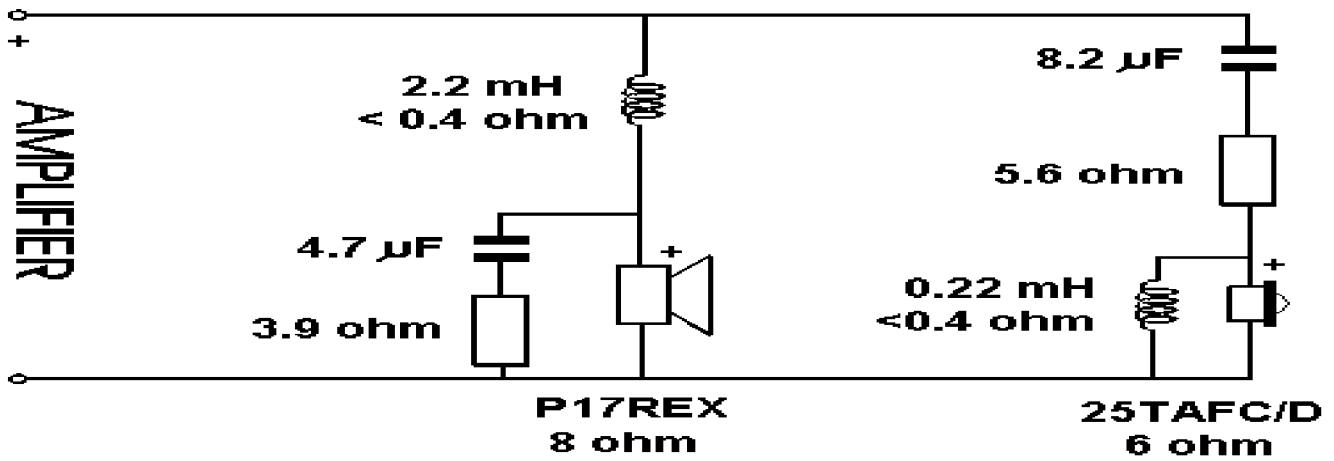
MATERIAL : 19mm MDF or chipwood

DAMPING : 50 mm synthetic damping on all walls, except front.

BASS PORT : ¥ 48mm x 100mm length.

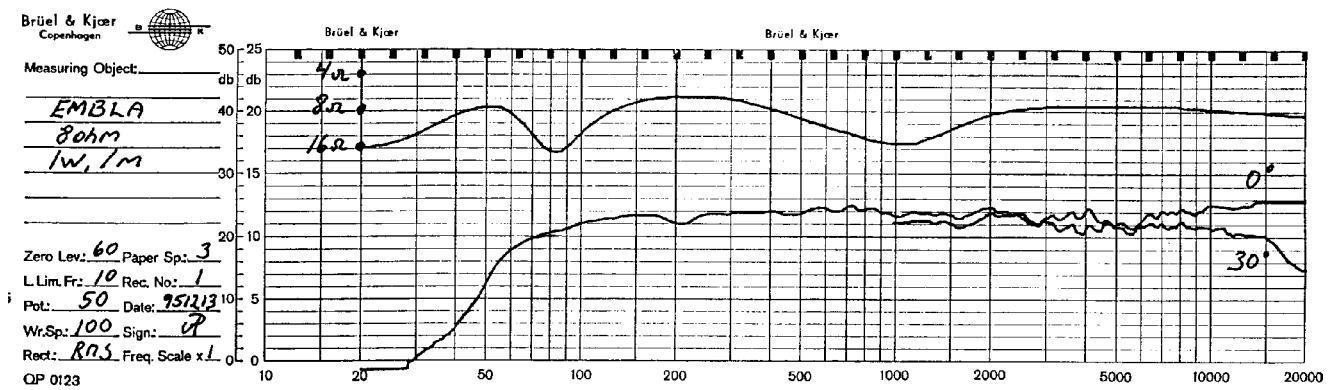
A chamfered or rounded edge around the front baffle will reduce edge reflections which cause irregular sound radiation in the upper frequency range, especially on axis.

CROSSOVER



We recommend the use of film capacitors.

Sound pressure and impedance curves recorded in anechoic chamber (Free-field 4 pi radiation)



TECHNICAL DATA

IMPEDANCE	8	Ohms
SHORT TERM MAX. POWER *	200	W
LONG TERM MAX. POWER *	80	W
CROSSOVER FREQUENCY	3000	Hz
FREQUENCY RANGE	42-20000	Hz

* = IEC 268-5

SENSITIVITY	87	dB SPL
OPERATING POWER	8.0	W
RECOMMENDED AMPLIFIER	20-150	W
DIMENSIONS	200x335x270	mm
CABINET VOLUME	12	Litres

SEAS reserves the right to change technical data