

## LM3886 Power Amp Project

Version 2007May18

Copyright 2004 JD Sleep

Permission refused for posting/serving this file from any site other than [www.generalguitargadgets.com](http://www.generalguitargadgets.com)

This is a power amp project based on the LM3886 or LM3876 amp ICs. Thanks to Dean Hazelwanter for the PCB design. For the Mute Switch: Install a jumper for normal operation, or use a SPST switch and label it "Standby".

### Bill of Materials

#### Resistors (1/4 watt rating)

2 – 1k  
1 – 33k  
1 – 39k  
1 – 10 ohm 2 watt resistor with 10-12 turns of #22 insulated wire

#### Pots (1/4 watt or higher rating)

1 – 10k trimmer

#### ICs

1 – LM3886 or LM3876

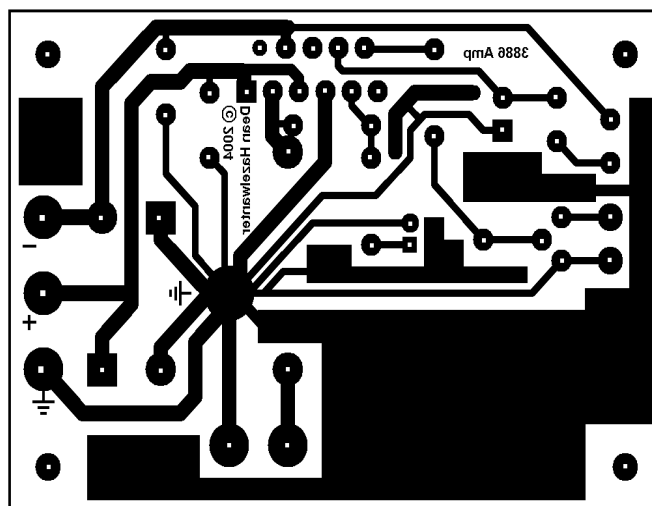
#### Capacitors (35 volt or higher)

2 – 0.1uf film  
1 – 10uF aluminum electrolytic

1 – 100uF aluminum electrolytic  
1 – 2200uF aluminum electrolytic

#### Other

1 – SPST (mute or standby switch)  
2 – mono quarter inch jacks  
18v bipolar power supply  
Copper-clad board, etchant, or perfboard  
24 gauge stranded wire  
Enclosure



Size 8.4cm x 5.8cm

## LM3886 Power Amp Project

Version 2007May18

Copyright 2004 JD Sleep

Permission refused for posting/serving this file from any site other than [www.generalguitargadgets.com](http://www.generalguitargadgets.com)

